

## The Whole Puzzle



Bethanie Albrecht, MSBSPD, IPPEM  
Connie Brooks, RN, IPPEM

## Objectives

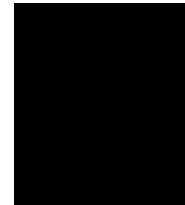
- Provide insight, potential partners, best practices and lessons learned to improve local planning efforts.
  - Gain a better understanding of the American's with Disabilities Act (ADA) in relation to planning for those with Functional and Access Needs
  - Increase knowledge on what a Functional and/or Access need really is
  - Evaluate best practices in preparedness of those with functional and access needs
  - Review the necessary whole community partners that should be invited to plan together
  - Understand the importance of better integration of functional and access needs planning
  - Review a planning matrix for a local jurisdiction

## Why?

- Americans with Disabilities Act of 1990
- US Department of Homeland Security/FEMA
  - National Response Framework
    - ESF 6-Mass Care
    - ESF 8-Public Health/Medical
  - CPG 301-Guide for Special Needs Planning
- CDC
  - PHEP Capability 7-Mass Care
- Pandemic and All-Hazards Preparedness Act

## Activity

- Sue's Experience



## Definitions...

- Disability: as many as 60 definitions
  - Commonly defined as "sensory, physical or cognitive limitations"
- At Risk: people with access and functional needs that may interfere with their ability to access or receive medical care before, during, or after a disaster or emergency
- Functional Needs: refer to restrictions or limitations an individual may have that requires assistance before, during, and/or after a disaster or public health emergency
- Access Needs: requires ensuring that resources are accessible to all individuals, such as social services, accommodations, information, transportation, medications to maintain health, etc.

## Visible/Non-Visible Considerations

Visible Disabilities	Non-Visible Disabilities
Blind	Medical conditions
Deaf	Chronic Pain
Wheelchair Bound	Chronic Fatigue
Portable Oxygen	Multiple Chemical Sensitivities
Difficulty Speaking or Hearing	Developmental or Learning Disorders
Severely Overweight	Substance Dependence

## Functional Areas

Functional Categories	Description
Maintaining independence	When support to remain independent has been taken away.
Communication	When there is an interference with the ability to get or respond to information.
Transportation	Can't evacuate or get around after the event.
Supervision	When there is a loss of support of caregivers or unable to cope in a new setting.
Medical Care	When not self-sufficient or no caregivers, and need assistance managing medical conditions that require treatment or observation and equipment.

## Then...

- February 2005
  - \$1,000 IPHA Mini Grant
  - Establish Special Needs Advisory Panel (SNAP)
  - Centers for Independent Living/Public Health/EMAs
- December 2006
  - IDPH Memo on Health Dept. & Hospital Role(s) in Special Needs Shelters
- March 2007
  - Dept. of Human Services Workshop on Special Needs Sheltering
- August 2010
  - LaSalle County SNAP

## Then...

- May 2008
  - CDC Cooperative Grant Agreement with IDPH for Special Needs Planning as outlined in the National Response Framework in March 2008
  - IDPH worked with IPHA to hire Collaborative Healthcare Urgency Group (CHUG) to develop and implement Integrated, Collaborative Emergency Planning – Communities Preparing to Meet Functional Needs Project
  - Planning included Local, Regional, and State level planners through IEMA Region Workshops
  - Goals of the project
    - Assess resources & capabilities for sheltering people with functional needs
    - Assess local EOPs for gaps in planning for those with functional needs
    - Review Area Agencies on Aging resources & capabilities and assess for integration into local EOP
    - Recommendations for improving and enhancing local and regional capabilities for functional needs sheltering

## Then...

- Regional Project Workshops
  - Round 1 May-June 2008
  - Round 2 July August 2008
  - Round 3 September 2008
  - Round 4 June 2009
  - Round 5 September 2010
    - Special Selection
- Workshop Outcomes
  - Mass Care/Mass Sheltering Guidance Document
  - EOP Recommendation Document
  - Mass Care/Mass Sheltering for Functional Needs Population Annex in the EOP

## Then...

- LaSalle County Functional Needs Task Force
  - Formed August 2010
  - Functional Needs Annex
    - Approved by IEMA County's EOP in June 2011
- Semi Annual Meetings
- Resource Guide

## Now...

- February 2014
  - Meetings began again due to new community interest
- New Goals
  - Update the Functional Needs Annex in the County EOP
  - Promote the newly established Functional Needs Database
  - Compile the information for the Resource Guide

## Planning Considerations



## Potential Partners

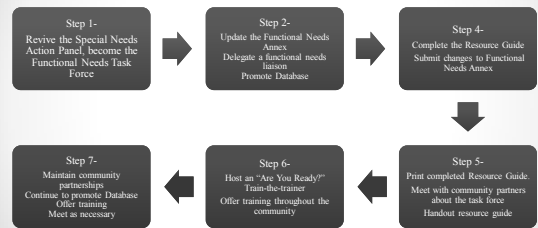
- Emergency Management
- Public Health
- Hospitals
- Long-Term Care
- Assisted Living
- Home Health
- Hospice
- Centers for Independent Living
- Durable Medical Equipment Providers
- Mental Health
- NGO
- School Districts
- Transportation Providers
- Fire/EMS/Law Enforcement
- Faith-Based Organizations

## Functional Needs Task Force

- Established to insure that a coordinated and collaborative response to Functional Needs Support Service requirements is rapid, efficient and effective
- Comprised of representatives from pre-identified stakeholders that have demonstrated an expertise and commitment to providing services to the Functional Needs Population



## Functional Needs Task Force

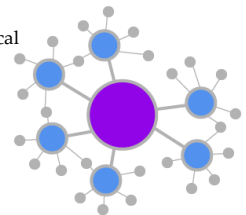


## Functional Needs Liaison

- Responsible for identifying and assessing Functional Needs Support Service requirements during and following a disaster/emergency
- Will have the authority, upon confirmation from EOC, to activate the Functional Needs Task Force
- Report directly to the EOC Manager

## Functional Needs Communication System

- Hub and Spoke
- Both critical and non-critical information



# Agency/Responsibility

Function/ Agency	Animals	Communications	Public Information	Medical Care/Equipment	Sheltering/ Alternate Housing	Evacuation Transportation
ARC		S			P	
DME Providers		S		P		
Faith Based Organizations		S				
Fire Departments		S				P
Law Enforcement		S				P
EMA	P	P	P			S
Home Health Agencies		P				
Long Term Care Facilities/Group Homes		S			P	
Schools		S			T	P
PH		P			S	
Hospitals		T		P	S	
EMS Systems		S				P

# Functional Needs Database

**Functional & Access Needs Database**

Responsible for ensuring the functional needs database is maintained on the Latah County Health Department, Latah County Emergency Management Agency, local public safety agencies and existing facilities for the purpose of providing the needs and the emergency response, transportation and sheltering. Further information can be found in a general information manual and Latah County and further requests that Latah County does not provide sheltering, other than the coordination of efforts with local agencies. Request copies to registration of persons with disabilities, a request from the process of information requests. The information submitted in this document will be not confidential and will be made available.

Last Name: \_\_\_\_\_ Address: \_\_\_\_\_  
 First Name: \_\_\_\_\_ City: \_\_\_\_\_  
 Phone #: \_\_\_\_\_ Zip Code: \_\_\_\_\_  
 Primary Language: \_\_\_\_\_  
 Residence Type (Single and Single Family—Mobile Home—Multi Family—Assisted Living): \_\_\_\_\_  
 Using Elevator (Y/N) (and): Alone—with relative—with care giver—Other: \_\_\_\_\_  
 Caregiver Name: \_\_\_\_\_ Caregiver Phone: \_\_\_\_\_

**Functional/Needs Need (Check all that apply)**

Mobility—conditions that require ongoing medical/professional assistance or assistive devices  
 Assistance—assistance with maintaining your ability to be independent  
 Communication—English is not your primary language and a language translator is needed  
 Transportation—either don't have or don't have access to  
 Independence—Others who are not living in care for themselves and older adults who need assistance with their activities of daily living

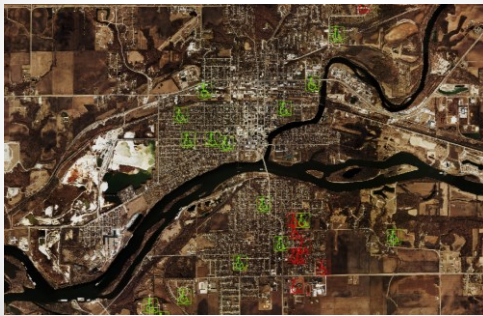
Describe: \_\_\_\_\_  
 List any special needs (medical equipment (Dialysis, insulin, TSP, insulin, wheelchair, etc.): \_\_\_\_\_

Special Medical Needs (Prescription, Vision, Hearing, etc.): \_\_\_\_\_  
 Special Medical Needs (Prosthetic, gender number): \_\_\_\_\_  
 Emergency Contact: \_\_\_\_\_  
 Name: \_\_\_\_\_ Phone: \_\_\_\_\_ Emergency Contact No: \_\_\_\_\_  
 Name: \_\_\_\_\_ Phone: \_\_\_\_\_ Emergency Contact No: \_\_\_\_\_

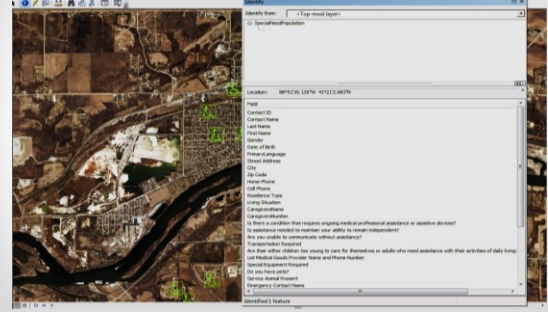
**Signature Required on the back of this page**

Revised 12/15/11

# Database-GIS



# Database-GIS



# Partnering with our MRC



# Local Planning Matrix

- Track>Objective>Action
  - Assess, Track, and Evaluate
  - Communication
  - Technical Assistance
  - Coordination

## Current Project

- Long-Term Care/Assisted Living Emergency Preparedness
  - NIMS/ICS Boot Camp
  - Planning Efforts
  - Local MOU



**Bethanie Albrecht, MSBSDP, IPEM**

LaSalle County Health Department  
Emergency Preparedness Specialist/MRC Coordinator  
[balbrecht@lasallemounty.org](mailto:balbrecht@lasallemounty.org)  
815-433-3366 Ext. 227

**Connie Brooks, RN, IPEM**

LaSalle County Emergency Management Agency  
Director  
[cbrooks@lasallemounty.org](mailto:cbrooks@lasallemounty.org)  
815-433-5622